

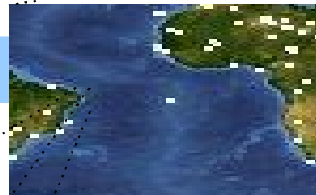


Real World Internet (IoT, etc.): Identity Management

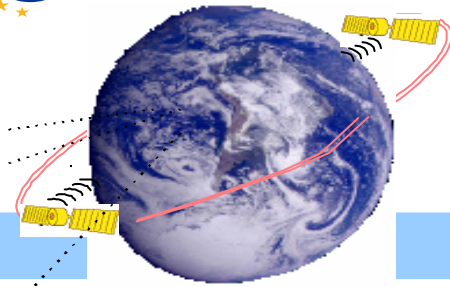
- Neeli Prasad, Aalborg University ASPIRE Project

scenario...

National and International zones



Global Information Village



Macrocells:

- Suburban
- Regional
- National



Microcells:

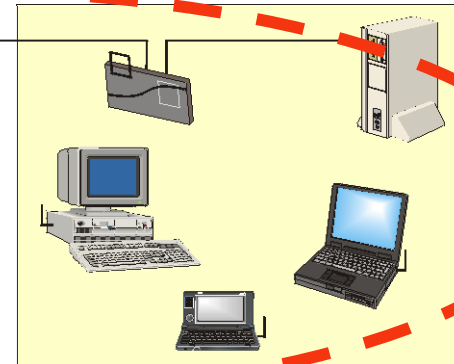
- City-centers
- Highways



Picocells:
In-house



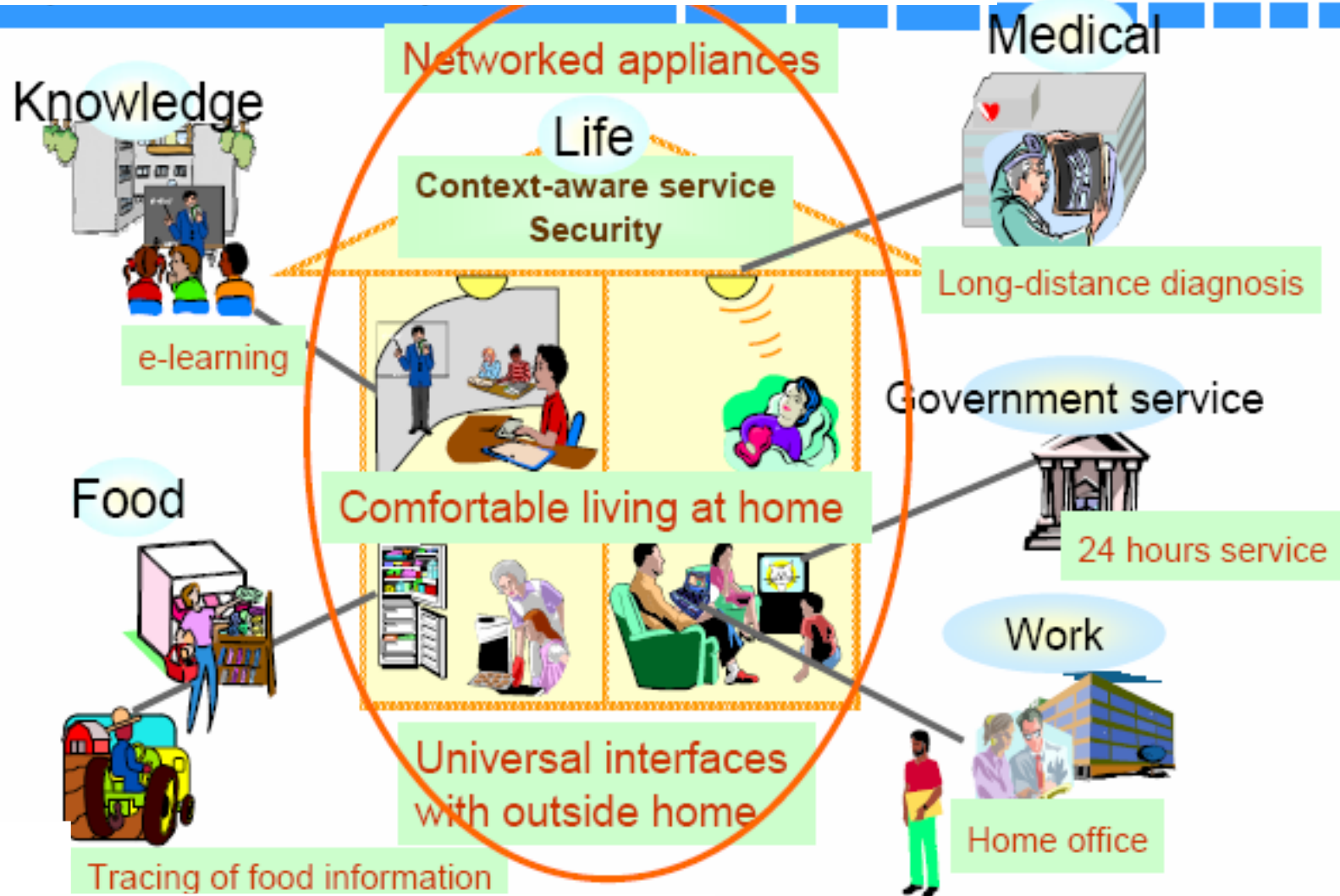
Personal Area Network (PAN)



Megacommunications (1 Tb/s)

Ramjee Prasad - 2008

IoT: My World



Identity implications

What does 'identity' really mean? Refining the elusive definitions of identity in the Real World Internet

Identity or credential?

User centric identity management?

Identity requirements

- In order to access a device or service, the user needs to provide an identity that can be authenticated and authorised by the RWI components.
- The provision of such an identity needs to be user friendly.
- In addition it should be possible to exchange the identity without affecting the privacy of the user.
- Concepts of anonymity and pseudonymity should be adapted to develop a coherent Identity Management solution, which is interoperable with the existing addressing, naming and Identity management systems.
- Scalable and efficient methods for protection of user identity will be defined.